



Time Machine® Sync Server (TMSS)

Enabler for Test Automation & Agile Continuous Integration

Sync Virtual Time across the Enterprise

The Time Machine Sync Server provides a centralized control center for broadcasting virtual clocks to all Time Machine servers in the enterprise, making management and deployment of virtual clocks a breeze. The Sync Server uses Sync Groups to group together target machines that can be on-premises or in the cloud. They can be Time Machine clients running on UNIX, Linux and Windows and can even include rules that have been defined with the Time Machine Framework for Oracle and the Time Machine Framework for WebLogic.

Simply deploy the Time Machine Sync Server to any UNIX, Linux or Windows server. So long as the Sync Server machine has Java version 1.6 or greater and network accessibility to the targets you need to control with synchronous virtual clocks, the choices are wide open. The Time Machine Management Console provides Sync Server users an intuitive GUI interface from which to create and manage Sync Groups.

Features

- Group Related Application Resources into Sync Groups
- Automate Date and Time Sensitive Testing by Defining Simple Rules
- Intuitive and Easy to use GUI

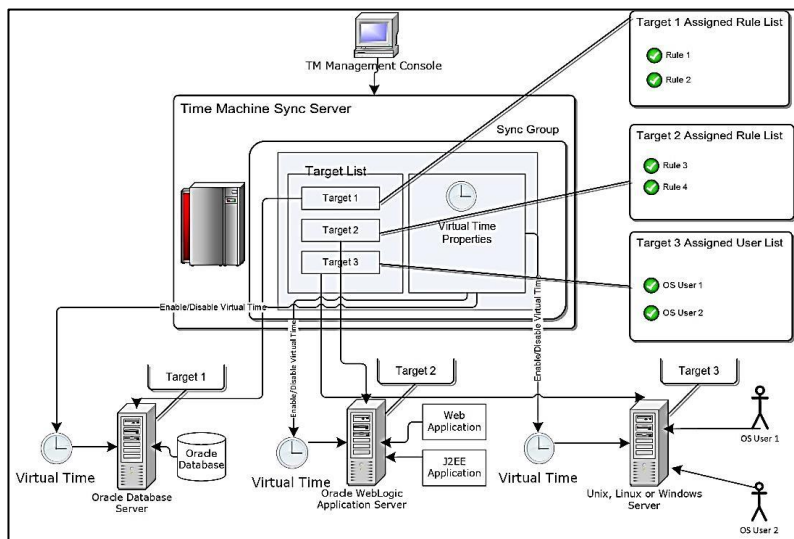
Supported on the Following Platforms:

- Linux
- Windows
- Solaris
- AIX
- HPUX

API for Enabling and Disabling Sync Groups Programmatically

Key Benefits

The Time Machine Sync Server also allows for the configuration of password protected roles facilitating Access Control Lists; providing a certain group of users the ability to set virtual clocks and others to actually manage and configure the Sync Groups and their targets.



Graphic 1

Ease of use for Automated Testing

Time Machine has long been the de facto standard in enabling the automation of time shift testing. Now, with the Time Machine Sync Server, a comprehensive API allows for the ability to enable, disable and set virtual time for a Sync Group programmatically. Just call the API as part of an automated testing script to enable the Sync Group, then proceed through the scripted test case(s), change the virtual time for the Sync Group to accommodate the next date centric test case and

Partners

Operating Systems

Windows®
 HP-UX™
 Linux
 Solaris™
 IBM AIX™

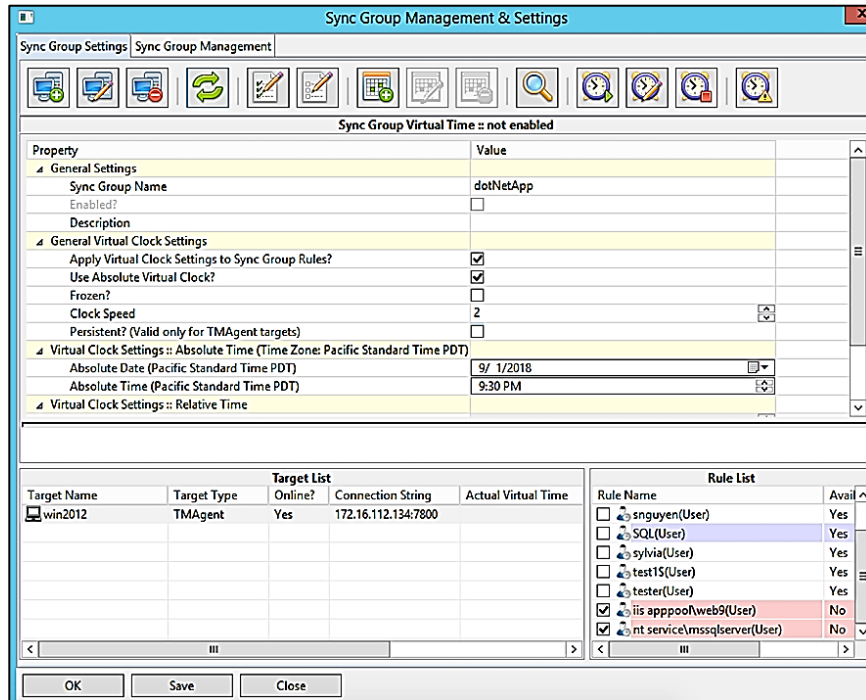
Requirements

Minimum 5 MB disk space
 32 MB memory

Certification

Microsoft Terminal Services
 MS-SQL Server
 Windows Server
 HP Integrity
 VMware
 Oracle RAC

when virtual clocks are no longer needed, the Sync Group can be disabled via the API. The API calls could be initiated from industry leading tools from HP, Oracle, IBM, SmartBear, open source tools like Selenium or even in pure development in test environments. So long as the scripting language has the ability to make a web service call via http(s), the Sync Server API will facilitate faster regression testing through automation.



Graphic 2

Virtual Clock Persistence

The Time Machine Sync Server has introduced another sought after feature. Solution-Soft's customers have requested virtual clock persistence and we have listened. Part of the Sync Group configuration allows for the virtual clocks to persist through the restart of the servers often required for things like system maintenance and the application of security patches. If a virtual clock was set for the target and marked as persistent, then at restart, when Time Machine and the Time Machine Agent start the virtual clocks will be re-established in a way that enables them to be in sync with the other targets in the Sync Group.

Request a Demo

Download a free Time Machine demo at www.solution-soft.com.
 For more information, call us at +1 (408) 346-1415 or email sales@solution-soft.com.



Headquarters

2350 Mission College Blvd.
 Suite 777
 Santa Clara, Ca 95054, U.S.A.
 1.408.346.1400

Sales

1.408.346.1415 (USA)
 +44.20.7193.3633 (EMEA)
 +61.2.6100.3030 (Asia Pacific)
sales@solution-soft.com

Technical Support

+1.408.346.1414
support@solution-soft.com

Europe

Trnska 8, Suite 7
 Belgrade, Serbia 11000
 +381.11.403.1523