



Solution-Soft

# Time Machine® Framework for WebSphere (TMFWS)

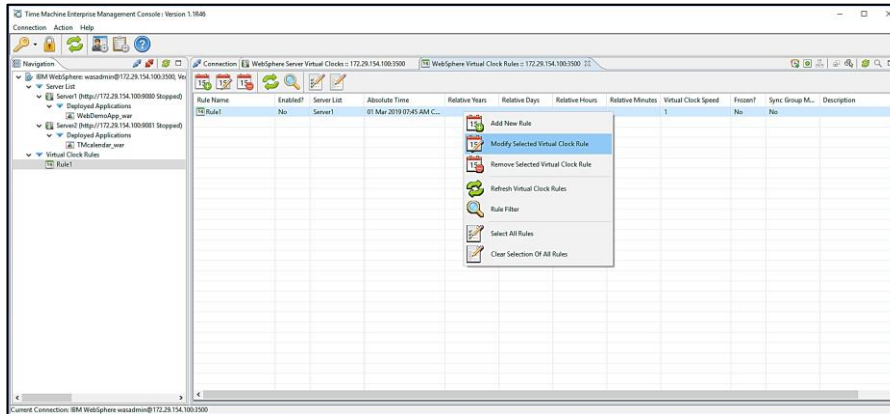
Enable Parallel Time Shift Testing for Java Apps Deployed to WebSphere

## Introducing the Time Machine Framework for WebSphere

The Time Machine Framework for WebSphere provides a great set of features enabling time shift testing scenarios for Java applications deployed to IBM WebSphere Application Server.

This Framework enables customers to use Time Machine functionality to time shift test Java applications within a WebSphere managed server without the need to create a separate instance of the application server for testing other time related activities. The Framework allows customers to configure and automatically create different virtual clocks on managed servers within the WebSphere domain as well as the granularity to establish virtual clock rules for specific applications deployed to the managed server.

The Time Machine Framework for WebSphere is controlled using the Time Machine Management Console, a Java application that provides an intuitive graphical interface for Time Machine and the Time Machine Suite of Products. With the Management Console, users can see the managed servers that are configured in WebSphere, what applications are deployed and easily establish real-time virtual clocks or rules that determine exactly when a virtual clock will be created.



Graphic 1

## Request a Demo

Download a free Time Machine demo at [www.solution-soft.com](http://www.solution-soft.com). For more information, call us at +1 (408) 346-1415 or email [sales@solution-soft.com](mailto:sales@solution-soft.com).



**Headquarters**  
 2350 Mission College Blvd. Suite 777  
 Santa Clara, Ca 95054, U.S.A.  
 1.408.346.1400

**Europe**  
 Trnska 8, Suite 7  
 Belgrade, Serbia 11000  
 +381.11.403.1523

**Sales**  
 1.408.346.1415 (USA)  
 +44.20.7193.3633 (EMEA)  
 +61.2.6100.3030 (Asia Pacific)  
[sales@solution-soft.com](mailto:sales@solution-soft.com)



**Technical Support**  
 +1.408.346.1414  
[support@solution-soft.com](mailto:support@solution-soft.com)

<https://www.facebook.com/solutionsoftsystems>

<https://twitter.com/SolutionSoftTM>

<https://www.linkedin.com/company/solution-soft>

## Features

Time Travel your Java Applications Deployed to IBM WebSphere Application Server  
 Automate Date and Time Sensitive Testing by Defining Simple Rules  
 Intuitive and Easy to Use GUI

Supported on the Following

- Linux
- Windows
- AIX

Programmable Java API

## Partners



## Certifications

Microsoft Terminal Services, MS-SQL Server, Windows Server, HP Integrity, VMware, Oracle RAC